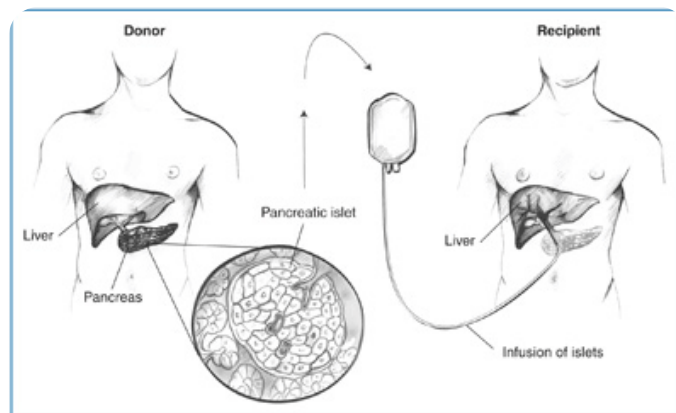


# Solutions for Islet Cell Therapy



cellgro®

## Cell Separation/Gradient Solutions

Cat. No.	Product	Size	Price
99-662-CVS	Stock Polysucrose Solution	300 mL	\$148.00
99-690-CIS	Islet Gradient 1.037	75 mL	\$63.25
99-691-CIS	Islet Gradient 1.096	75 mL	\$85.10
99-692-CIS	Islet Gradient 1.108	75 mL	\$101.20
99-815-CIS	Islet Gradient 1.069	75 mL	\$71.30
25-072-CI	Lymphocyte Separation Media 1.077	100 mL	\$30.86
25-072-CV	Lymphocyte Separation Media 1.077	500 mL	\$113.66
61-196-RM	Polysucrose 400 (generic form of Ficoll 400)	100 gms	\$181.60
61-196-RO	Polysucrose 400 (generic form of Ficoll 400)	500 gms	\$338.26

## Porcine Solutions

Cat. No.	Product	Size	Price
98-343-CV	NeoNatal Porcine Islet Culture Medium	500 mL	\$70.00
99-601-CM	Medium 199 1X E199 (Porcine Modification)	1 Liter	\$19.50

## Preservation Solutions

Cat. No.	Product	Size	Price
99-408-CM	Glucose Solution (Euro Collins)	1 Liter	\$40.00
99-409-CI	Electrolyte Solution (Euro Collins)	100 mL	\$40.00
	(20 mL 99-409-CI added to 1 L of 99-408-CM)		
98-451-CM	Organ Processing Solution	1 Liter	\$150.00

## Serum/Albumin - Call for Current Pricing

Cat. No.	Product	Size
35-010-CV	Fetal Bovine Serum USDA Certified	500 mL
35-011-CV	Fetal Bovine Serum - Heat Inactivated USDA	500 mL
35-015-CV	Fetal Bovine Serum - US Origin	500 mL
35-016-CV	Fetal Bovine Serum - Heat Inactivated US Origin	500 mL
35-060-CI	Human AB Serum	100 mL
35-040-CV	Porcine Serum	500 mL

## Related Solutions and Reagents

Cat. No.	Product	Size	Price
15-110-CV	CMRL 1066 without phenol red, without L-Glutamine (transplant)	6 x 500 mL	\$196.39/pack
10-043-CV	RPMI 1640 with L-Glutamine without glucose	6 x 500 mL	\$180.14/pack



Established in 2004, studies conducted by the CIT Consortium focus on improving the safety and long-term success of methods for transplanting islets in people whose islets have been destroyed by the autoimmune process that characterizes type 1 diabetes.

[www.citiletstudy.org](http://www.citiletstudy.org)

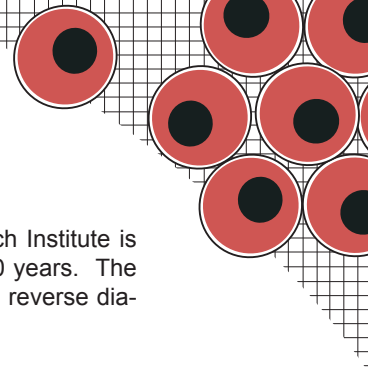
Cat. No.	Product	Size	Price
99-678-CM	Phase I Solution	1 Liter	\$43.75
99-677-CM	Cold Storage/Purification Stock Solution	1 Liter	\$175.00
99-676-CM	Trimming Solution	1 Liter	\$26.00
99-674-CM	Gradient Stock Solution	1 Liter	\$425.00
99-723-CM	Pentastarch, 10% Solution	1 Liter	\$300.00
98-291-CV	CMRL 1066, Transplant Media with HEPES, without sodium bicarbonate and phenol red	500 mL	\$55.00
98-304-CV	CMRL 1066, CIT Culture Media	500 mL	\$29.50
25-060-CI	HEPES (1M) Solution (Free Acid)	6 x 100 mL	\$255.31
99-597-CM	Hank's Balanced Salt Solution (with Serum) ( <i>University of Miami DRI Modification</i> )	1 Liter	\$25.00
99-595-CM	RPMI 1640 1X (Mod. for Islet Isolations) ( <i>University of Miami DRI Modification</i> )	1 Liter	\$17.50



The Best Hope for a Cure®

A recognized world leader in diabetes research, the Diabetes Research Institute is focused solely on finding a cure for diabetes and has been for over 40 years. The Institute has pioneered new therapies to restore insulin production and reverse diabetes in patients.

[www.diabetesresearch.org](http://www.diabetesresearch.org)



Cat. No.	Product	Size	Price
98-021-CV	Miami Medium #1A Culture Medium (with Human Serum Albumin, without antibiotics)	500 mL	\$86.25
99-933-CV	Miami Medium #1A (for shipping Islets only)	500 mL	\$105.00
99-603-CV	CMRL 1066 Supplemented	500 mL	\$28.00
99-663-CV	Transplant Medium (CMRL 1066) without phenol red	500 mL	\$25.00
99-597-CM	Hank's Balanced Salt Solution 1X, (modified for Islets) <i>(University of Miami DRI Modification)</i>	1 Liter	\$25.00
99-945-CM	Miami HBSS #2 (with HEPES)	1 Liter	\$33.00
99-595-CM	RPMI 1640 (Modified for Islets) <i>(University of Miami DRI Modification)</i>	1 Liter	\$17.50
99-944-CM	Miami RPMI #2 (with HEPES)	1 Liter	\$24.00

Novel cell culture technology allows the proliferation of functional, normal adult human cells in long-term culture, targeted at both the research and therapeutic markets.  
[www.hcell.com](http://www.hcell.com)

Cat. No.	Product	Size	Price
98-318-CV	Isletlife Complete (with 6% FBS) (hCell SBMI-06)	500 mL	\$250.00
98-319-CV	Isletlife Free - Serum-free/Protein-free Pancreatic Islet Medium for Clinical Use	500 mL	\$225.00





Multicenter Clinical Trial of the Edmonton Protocol for Islet Transplantation

## The New England Journal of Medicine

© Copyright, 2000, by the Massachusetts Medical Society

VOLUME 343

JULY 27, 2000

NUMBER 4



### ISLET TRANSPLANTATION IN SEVEN PATIENTS WITH TYPE 1 DIABETES MELLITUS USING A GLUCOCORTICOID-FREE IMMUNOSUPPRESSIVE REGIMEN

A.M. JAMES SHAPIRO, M.B., B.S., JONATHAN R.T. LAKEY, PH.D., EDMOND A. RYAN, M.D., GREGORY S. KORBUTT, PH.D., ELLEN TOTH, M.D., GARTH L. WARNOCK, M.D., NORMAN M. KNETEMAN, M.D., AND RAY V. RAJOTTE, PH.D.

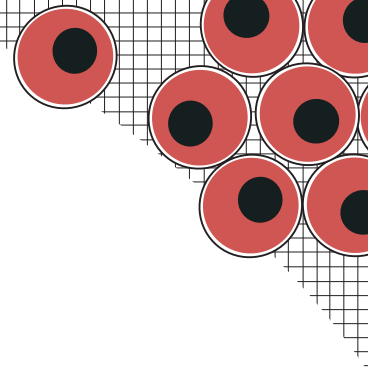
#### ABSTRACT

**Background** Registry data on patients with type 1 diabetes mellitus who undergo pancreatic islet transplantation indicate that only 8 percent are free of the need for insulin therapy at one year.

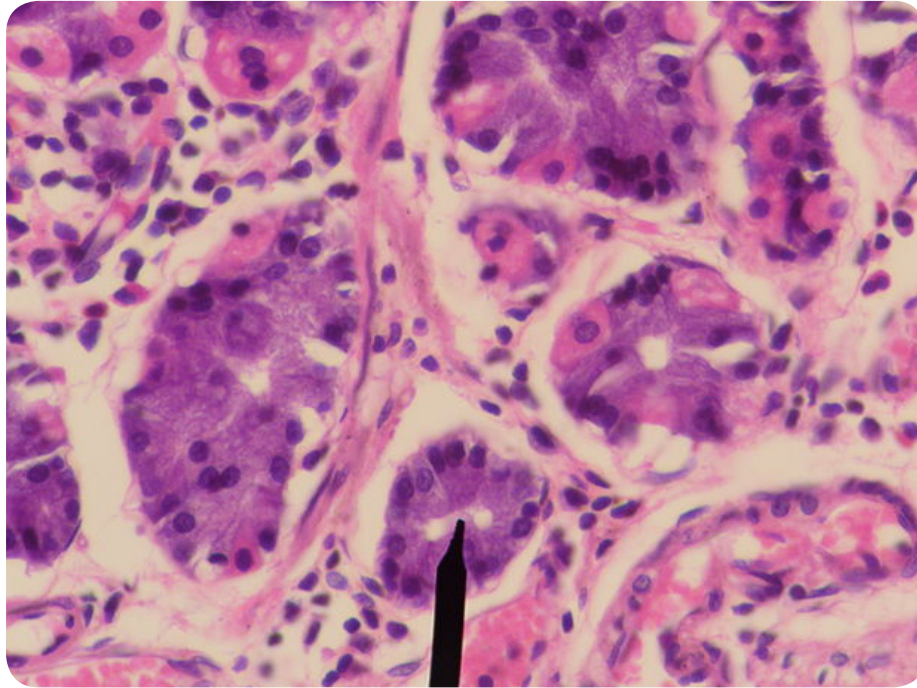
ISLET transplantation has been investigated as a treatment for type 1 diabetes mellitus in selected patients with inadequate glucose control despite insulin therapy. However, the perennial hope that such an approach would result in long-

Cat. No.	Product	Size	Price
99-781-CV	Perfusion Solution with HEPES and CaCl	500 mL	\$24.00
99-782-CM	Priming Solution with HEPES	1 Liter	\$35.00
99-783-CM	Dilution Solution with HEPES, without Human Serum Albumin	1 Liter	\$31.00
99-784-CM	Wash Solution with HEPES, without Human Serum Albumin	1 Liter	\$33.00
99-785-CV	Final Wash Solution/Culture Medium	500 mL	\$65.00
99-786-CV	Functionality/Viability Medium, CMRL 1066, (without glucose)	500 mL	\$32.00
99-787-CI	Sterile Glucose Solution (45%)	100 mL	\$20.00

cellgro®



## Changing Lives Through Innovative Technology



**Orders may be place via:**

Toll Free Number.....(800)-CELLGRO (235-5476)  
Telephone.....(703) 471-5955  
Fax.....(703) 471-0363  
Email.....custserv@cellgro.com  
Website.....www.cellgro.com

\*Pricing subject to change without notice\*

\*\*Islet products are not available for purchase on our website. Please contact Customer Support at 800-CELLGRO (235-5476) or custserv@cellgro.com for more information\*\*